

VARIATION AX

JEDEC SOLID STATE
PRODUCT OUTLINE
Copyright © 2022 JEDEC

THIS *REGISTERED OUTLINE* HAS BEEN PREPARED BY THE JEDEC JC-11 COMMITTEE
AND REFLECTS A PRODUCT WITH ANTICIPATED USAGE IN THE ELECTRONICS INDUSTRY;
CHANGES ARE LIKELY TO OCCUR.

TITLE PLASTIC MULTI
FLANGE MOUNT
RECTANGULAR FAMILY PACKAGE

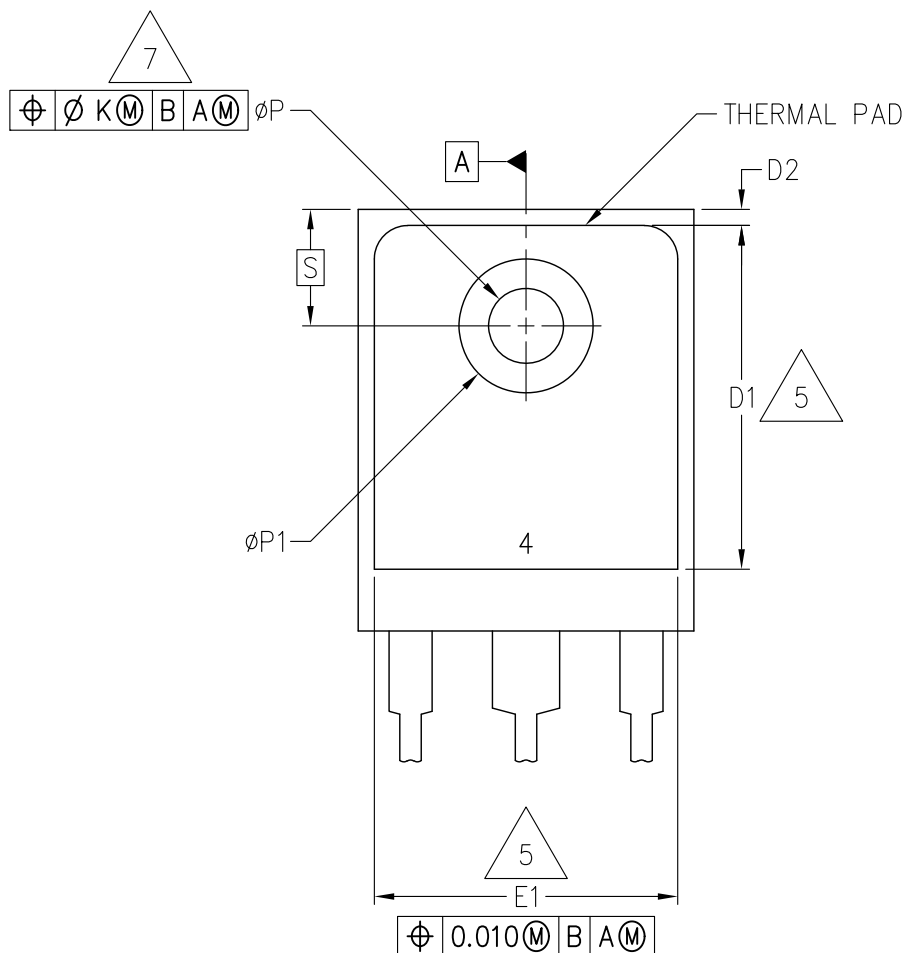
PACKAGE DESIGNATOR
PMFM K#_I...

ITEM
TO-247

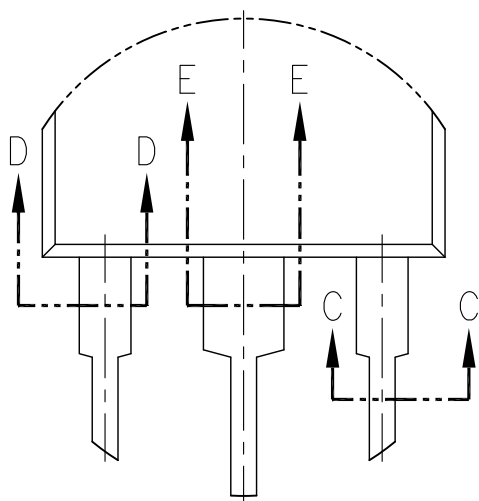
ISSUE
F

DATE
AUG 2022

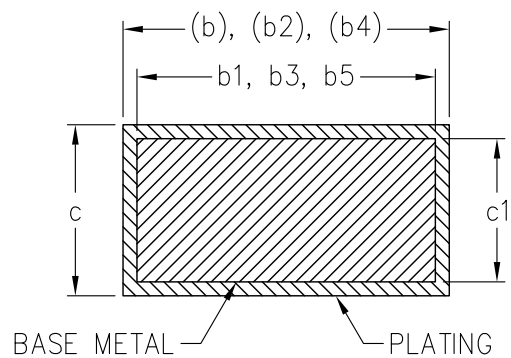
SHEET
1 OF 13



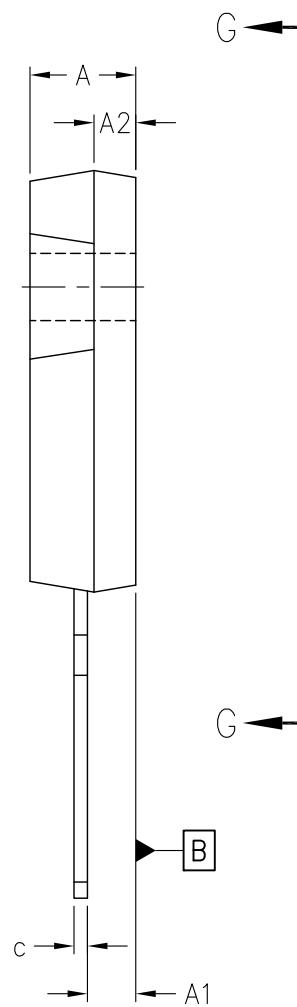
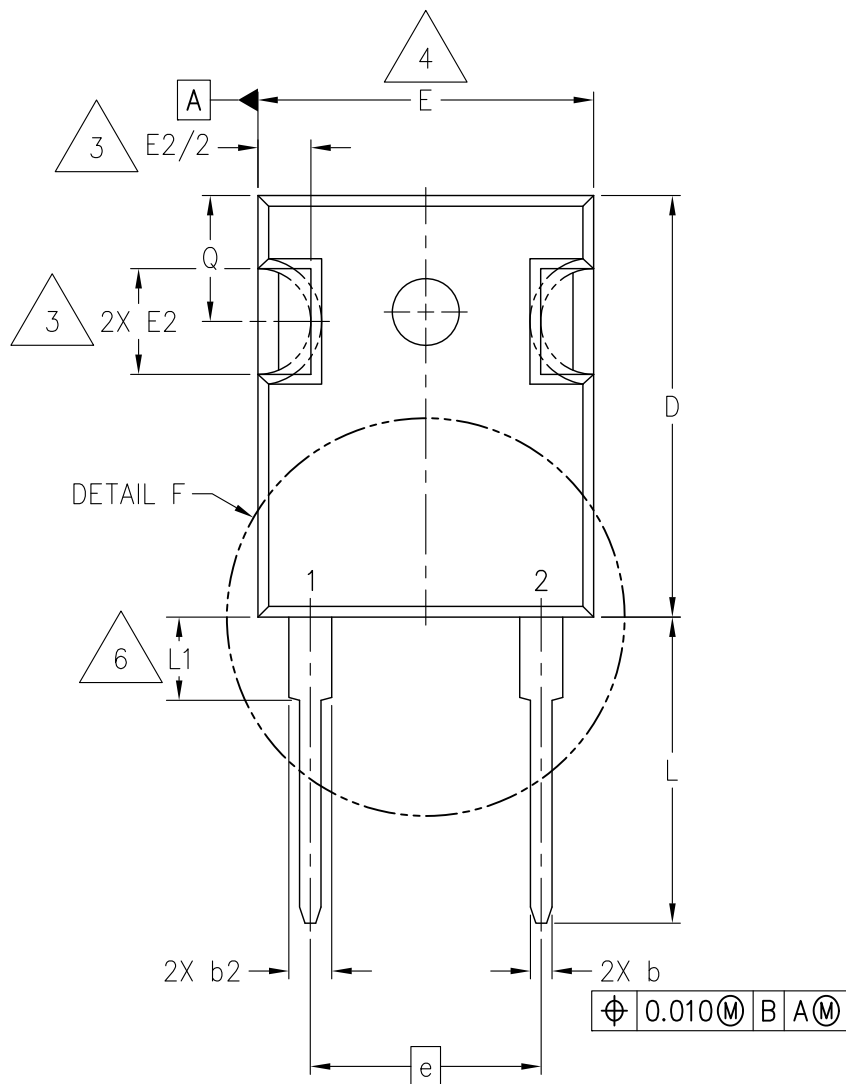
VIEW A-A



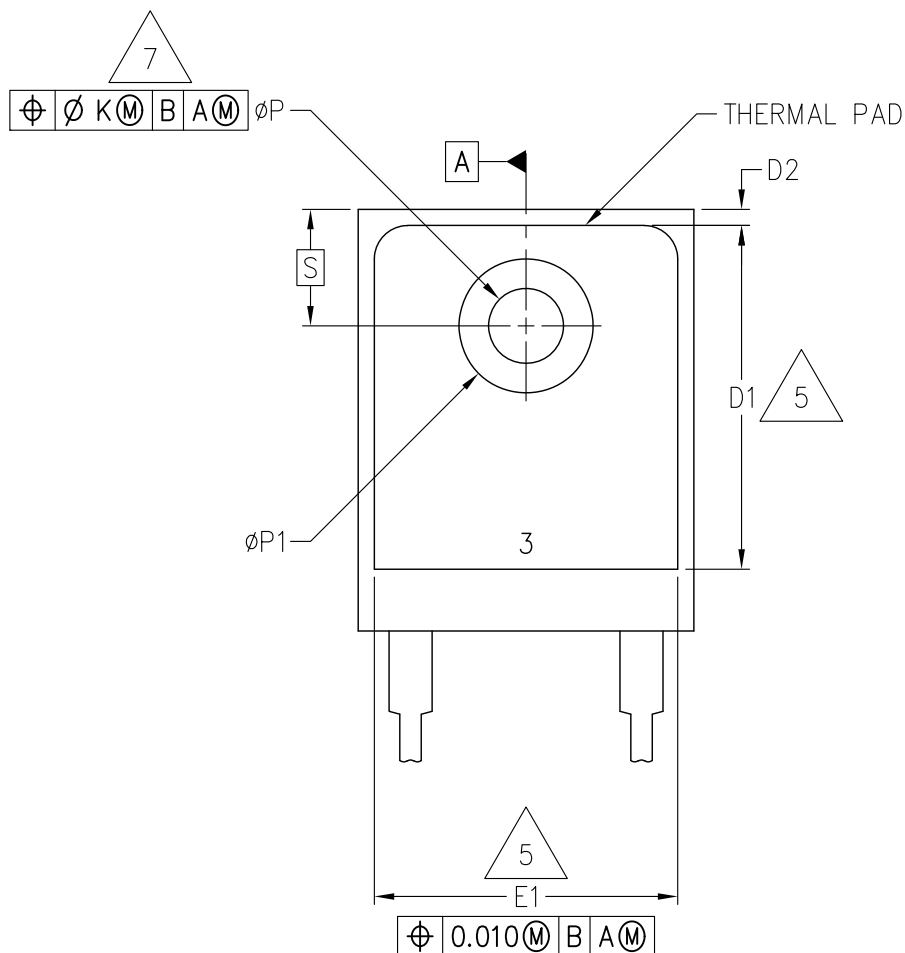
DETAIL B



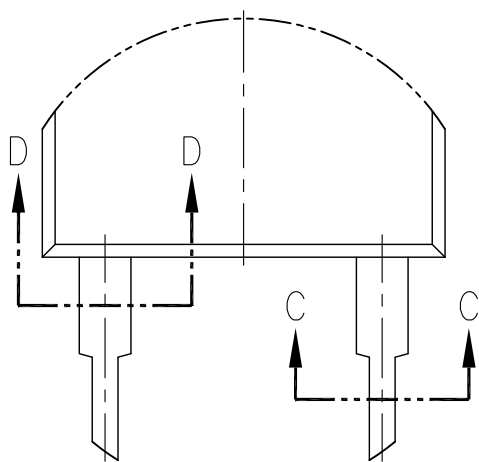
SECTION C-C
SECTION D-D
SECTION E-E



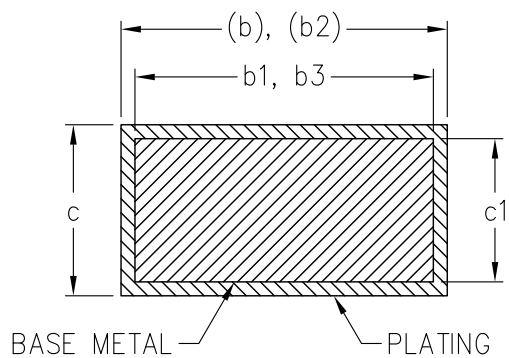
VARIATION BX



VIEW G-G



DETAIL F



SECTION C-C
SECTION D-D

TABLE 1

SYMBOL	VARIATION AA						
	PMFM-K4_I5p461- R15p875x20p295Z5p309- R1p397x0p889T10p491						
	INCHES			MILLIMETERS			NOTES
	MIN	NOM	MAX	MIN	NOM	MAX	
A	0.185	---	0.209	4.699	---	5.309	
A1	0.087	---	0.102	2.210	---	2.591	
A2	0.059	---	0.098	1.499	---	2.489	
D	0.776	---	0.799	19.710	---	20.295	4
E	0.602	---	0.625	15.291	---	15.875	4
E2	0.178	---	0.216	4.521	---	5.486	3
e	0.215 BASIC			5.461 BASIC			
øK	0.010			0.254			
L	0.559	---	0.582	14.199	---	14.783	
L1	0.146	---	0.169	3.708	---	4.292	6
P	0.118	---	0.133	2.997	---	3.378	7
Q	0.209	---	0.224	5.309	---	5.690	
øS	0.217 BASIC			5.512 BASIC			
NOTES	1, 2			1, 2			
REF	10-425			10-460			
ISSUE	E			F			

TABLE 1 CONTINUED

SYMBOL	VARIATION AB						
	PMFM-K4_I5p563- R15p875x20p828Z4p699- R1p397x0p889T12p395						
	INCHES			MILLIMETERS			NOTES
	MIN	NOM	MAX	MIN	NOM	MAX	
A	0.175	---	0.185	4.445	---	4.699	
A1	0.090	---	0.115	2.286	---	2.921	
A2	0.054	---	0.064	1.372	---	1.626	
D	0.800	---	0.820	20.320	---	20.828	4
E	0.610	---	0.625	15.494	---	15.875	4
E2	0.136	---	0.145	3.454	---	3.683	3
e	0.219 BASIC			5.563 BASIC			
øK	0.010			0.254			
L	0.625	---	0.635	15.875	---	16.129	
L1	0.137	---	0.147	3.480	---	3.734	6
P	0.126	---	0.135	3.200	---	3.429	7
Q	0.292	---	0.302	7.417	---	7.671	
øS	0.215 BASIC			5.461 BASIC			
NOTES	1, 2			1, 2			
REF	10-124, 10-425			10-460			
ISSUE	E			F			

TABLE 1 CONTINUED

SYMBOL	VARIATION AC						
	PMFM-K4_I5p461- R15p875x20p701Z5p309- R1p397x0p889T11p811						
	INCHES			MILLIMETERS			NOTES
	MIN	NOM	MAX	MIN	NOM	MAX	
A	0.183	---	0.209	4.648	---	5.309	
A1	0.087	---	0.102	2.210	---	2.591	
A2	0.059	---	0.098	1.499	---	2.489	
D	0.776	---	0.815	19.710	---	20.701	4
E	0.602	---	0.625	15.291	---	15.875	4
E2	0.178	---	0.216	4.521	---	5.486	3
e	0.215 BASIC			5.461 BASIC			
øK	0.010			0.254			
L	0.559	---	0.634	14.199	---	16.104	
L1	0.146	---	0.169	3.708	---	4.293	6
P	0.140	---	0.144	3.556	---	3.658	7
Q	0.224	---	0.229	5.690	---	5.817	
øS	0.217 BASIC			5.512 BASIC			
NOTES	1, 2			1, 2			
REF	10-127, 10-425			10-460			
ISSUE	E			F			

TABLE 1 CONTINUED

SYMBOL	VARIATION AD						
	PMFM-K4_I5p461- R16p256x21p463Z5p309- R1p397x0p889T15p824						
	INCHES			MILLIMETERS			NOTES
	MIN	NOM	MAX	MIN	NOM	MAX	
A	0.185	---	0.209	4.699	---	5.309	
A1	0.087	---	0.102	2.210	---	2.591	
A2	0.059	---	0.098	1.499	---	2.489	
D	0.819	---	0.845	20.803	---	21.463	4
E	0.610	---	0.640	15.494	---	16.256	4
E2	0.170	---	0.216	4.318	---	5.486	3
e	0.215 BASIC			5.461 BASIC			
øK	0.025			0.635			
L	0.780	---	0.800	19.812	---	20.320	
L1	---	---	0.177	---	---	4.496	6
P	0.140	---	0.144	3.556	---	3.658	7
Q	0.212	---	0.224	5.385	---	5.690	
øS	0.242 BASIC			6.147 BASIC			
NOTES	1, 2			1, 2			
REF	10-261, 10-266, 10-425			10-460			
ISSUE	E			F			

TABLE 1 CONTINUED

SYMBOL	VARIATION AE						
	PMFM-K4_I5p461- R16p002x20p904Z5p309- R1p397x0p889T12p7						
	INCHES			MILLIMETERS			NOTES
	MIN	NOM	MAX	MIN	NOM	MAX	
A	0.185	---	0.209	4.699	---	5.309	
A1	0.098	---	0.115	2.489	---	2.921	
A2	0.066	---	0.079	1.676	---	2.007	
D	0.803	---	0.823	20.396	---	20.904	4
E	0.606	---	0.630	15.392	---	16.002	4
E2	0.129	---	0.150	3.277	---	3.810	3
e	0.215 BASIC			5.461 BASIC			
øK	0.010			0.254			
L	0.610	---	0.634	15.494	---	16.104	
L1	0.122	---	0.134	3.099	---	3.404	6
P	0.137	---	0.146	3.480	---	3.708	7
Q	0.283	---	0.296	7.188	---	7.518	
øS	0.209 BASIC			5.309 BASIC			
NOTES	1, 2			1, 2			
REF	10-287, 10-425			10-460			
ISSUE	E			F			

TABLE 1 CONTINUED

SYMBOL	VARIATION BD						
	PMFM-K3_I10p922- R16p256x21p463Z5p309- R1p397x0p889T15p824						
	INCHES			MILLIMETERS			NOTES
	MIN	NOM	MAX	MIN	NOM	MAX	
A	0.185	---	0.209	4.699	---	5.309	
A1	0.087	---	0.102	2.210	---	2.591	
A2	0.059	---	0.098	1.499	---	2.489	
D	0.819	---	0.845	20.803	---	21.463	4
E	0.610	---	0.640	15.494	---	16.256	4
E2	0.170	---	0.216	4.318	---	5.486	3
e	0.430 BASIC			10.922 BASIC			
øK	0.025			0.635			
L	0.780	---	0.800	19.812	---	20.320	
L1	---	---	0.177	---	---	4.496	6
P	0.140	---	0.144	3.556	---	3.658	7
Q	0.212	---	0.244	5.385	---	6.198	
øS	0.242 BASIC			6.147 BASIC			
NOTES	1, 2			1, 2			
REF	10-460			10-460			
ISSUE	F			F			

TABLE 2

SYMBOL	COMMON DIMENSIONS VARIATIONS AX						
	INCHES			MILLIMETERS			NOTES
	MIN	NOM	MAX	MIN	NOM	MAX	
b	0.039	----	0.055	0.991	----	1.397	
b1	0.039	----	0.053	0.991	----	1.346	
b2	0.065	----	0.094	1.651	----	2.388	6
b3	0.065	----	0.092	1.651	----	2.337	
b4	0.102	----	0.135	2.591	----	3.429	6
b5	0.102	----	0.133	2.591	----	3.378	
c	0.015	----	0.035	0.381	----	0.889	6
c1	0.015	----	0.033	0.381	----	0.838	
D1	0.515	----	----	13.081	----	----	5
D2	0.020	----	0.053	0.508	----	1.346	
E1	0.530	----	----	13.462	----	----	5
øP1	----	----	0.291	----	----	7.391	
N	3			3			
NOTES	1, 2			1, 2			
REF	10-425			10-460			
ISSUE	E			F			

TABLE 2 CONTINUED

SYMBOL	COMMON DIMENSIONS VARIATIONS BX						
	INCHES			MILLIMETERS			NOTES
	MIN	NOM	MAX	MIN	NOM	MAX	
b	0.039	----	0.055	0.991	----	1.397	
b1	0.039	----	0.053	0.991	----	1.346	
b2	0.065	----	0.094	1.651	----	2.388	6
b3	0.065	----	0.092	1.651	----	2.337	
b4	----	----	----	----	----	----	
b5	----	----	----	----	----	----	
c	0.015	----	0.035	0.381	----	0.889	6
c1	0.015	----	0.033	0.381	----	0.838	
D1	0.515	----	----	13.081	----	----	5
D2	0.020	----	0.053	0.508	----	1.346	
E1	0.530	----	----	13.462	----	----	5
øP1	----	----	0.291	----	----	7.391	
N	2			2			
NOTES	1, 2			1, 2			
REF	10-460			10-460			
ISSUE	F			F			

NOTES:

1. DIMENSIONING AND TOLERANCING PER ASME Y14.5–2009.

2. ALL DIMENSIONS ARE IN INCHES AND MILLIMETERSS.



SLOT REQUIRED, NOTCH MAY BE ROUNDED.



DIMENSION D & E DO NOT INCLUDE MOLD FLASH. MOLD FLASH SHALL NOT EXCEED .005 INCH PER SIDE. THESE DIMENSIONS ARE MEASURED AT THE OUTERMOST EXTREME OF THE PLASTIC BODY.



THERMAL PAD CONTOUR OPTIONAL WITHIN DIMENSIONS D1 & E1.



LEAD FINISH UNCONTROLLED IN L1.



ØP TO HAVE A MAXIMUM DRAFT ANGLE OF 1.5° TO THE TOP OF THE PART WITH A MAXIMUM HOLE DIAMETER OF .154 INCH.

STP (3D) FILE RECORD
3D FILE NAMES MAY EXCEED LENGTH REQUIREMENTS FOR SOME SOFTWARE TOOLS.

STP FILE NAME	DATE	ITEM NUMBER
TO-247F_PMFm-K3_l10p922-R16p256x21p463Z5p309-R1p397x0p889T15p824	AUG 2022	10-460

JEDEC SOLID STATE PRODUCT OUTLINE Copyright © 2022 JEDEC	TITLE PLASTIC MULTI FLANGE MOUNT RECTANGULAR FAMILY PACKAGE	ITEM TO-247	ISSUE F	DATE AUG 2022	SHEET i
--	--	----------------	------------	------------------	------------

TASK GROUP CONTRIBUTORS

NEXPERIA

CHANGE RECORD

IF THE CHANGE INVOLVES ANY WORDS ADDED OR DELETED (EXCLUDING DELETION OF ACCIDENTALLY REPEATED WORDS), THE CHANGE IS TO BE INCLUDED BELOW. PUNCTUATION CHANGES MAY OR MAY NOT BE INCLUDED.

INITIAL ISSUE: A	DATE: UNKNOWN	ITEM NUMBER: 10-124
------------------	---------------	---------------------

CHANGE RECORD HISTORY:

ISSUE: B	DATE: UNKNOWN	ITEM NUMBER: 10-127
----------	---------------	---------------------

ISSUE: C	DATE: JANUARY 1989	ITEM NUMBER: 10-261
----------	--------------------	---------------------

ISSUE: D	DATE: JULY 1990	ITEM NUMBER: 10-287
----------	-----------------	---------------------

ISSUE: E	DATE: JUNE 2004	ITEM NUMBER: 10-425
----------	-----------------	---------------------

ISSUE: E.01	DATE: NOVEMBER 2005	ITEM NUMBER: 10-425E.01
-------------	---------------------	-------------------------

ISSUE: F	DATE: AUGUST 2022	ITEM NUMBER: 10-460
----------	-------------------	---------------------

LOCATION	CHANGED FROM:	CHANGED TO:
ALL SHEETS		UPDATED TO CURRENT FORMAT
SHEET 1	PACKAGE DESIGNATOR R-PSIP-F3	PACKAGE DESIGNATOR PMFM K#_I...
SHEETS 3 & 4		ADDED VIEWS OF VARIATION BD
SHEETS 5 - 9, & 11		ADDED MILLIMETER DIMENSIONS
SHEET 10		ADDED VARIATION BD
SHEET 12		ADDED VARIATION BX COMMON DIMENSIONS
SHEET 13, NOTE 2		ADDED 'AND MILLIMETERSS'

JEDEC SOLID STATE PRODUCT OUTLINE Copyright © 2022 JEDEC	TITLE PLASTIC MULTI FLANGE MOUNT RECTANGULAR FAMILY PACKAGE	ITEM TO-247	ISSUE F	DATE AUG 2022	SHEET iii
--	--	----------------	------------	------------------	--------------